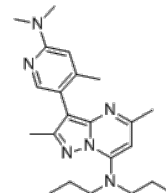


Product Name : R121919
Cat. No. : PC-21280
CAS No. : 195055-03-9
Molecular Formula : C₂₂H₃₂N₆
Molecular Weight : 380.54
Target : CRF Receptor
Solubility : 10 mM in DMSO



Biological Activity

R121919 (NBI30775) is a highly potent, selective and nonpeptide antagonist of corticotropin-releasing factor 1 (CRF1) receptor with binding K_i of 3 nM (human and rat CRHR1), inhibits CRHR1-mediated signal transduction in transfected cells with IC₅₀ of 60 nM.

R121919 has a 1000-fold lower affinity to 70 other central receptors tested.

R121919 dose-dependently suppresses CRH-induced ACTH secretion in rat corticotrope cells.

R121919 attenuates the behavioral and endocrine responses to stress in rats.

References

Gutman DA, et al. J Pharmacol Exp Ther. 2003 Feb;304(2):874-80.

Lancel M, et al. J Psychiatr Res. 2002 Jul-Aug;36(4):197-208.

M E Keck, et al. Eur J Neurosci. 2001 Jan;13(2):373-80.

Caution: Product has not been fully validated for medical applications. Lab Use Only!

E-mail: tech@probechem.com